

Anti-APOA1BP Antibody
Rabbit polyclonal antibody to APOA1BP
Catalog # AP59892**Specification**

Anti-APOA1BP Antibody - Product Information

| | |
|-------------------|-------------------------------------|
| Application | WB, IF/IC |
| Primary Accession | Q8NCW5 |
| Other Accession | Q8K4Z3 |
| Reactivity | Human, Mouse, Rat, Pig, Bovine, Dog |
| Host | Rabbit |
| Clonality | Polyclonal |
| Calculated MW | 31675 |

Anti-APOA1BP Antibody - Additional Information**Gene ID** 128240**Other Names**

AIBP; YJEFN1; NAD(P)H-hydrate epimerase; Apolipoprotein A-I-binding protein; AI-BP; NAD(P)HX epimerase; YjeF N-terminal domain-containing protein 1; YjeF_N1

Target/Specificity

Recognizes endogenous levels of APOA1BP protein.

DilutionWB~~WB (1/500 - 1/1000), IF/IC (1/100 - 1/500)
IF/IC~~N/A**Format**

Liquid in 0.42% Potassium phosphate, 0.87% Sodium chloride, pH 7.3, 30% glycerol, and 0.09% (W/V) sodium azide.

Storage

Store at -20 °C.Stable for 12 months from date of receipt

Anti-APOA1BP Antibody - Protein Information**Name** NAXE ([HGNC:18453](#))**Function**

Catalyzes the epimerization of the S- and R-forms of NAD(P)HX, a damaged form of NAD(P)H that is a result of enzymatic or heat-dependent hydration (By similarity) (PubMed:27616477). This is a prerequisite for the S-specific NAD(P)H-hydrate dehydratase to allow the repair of both epimers of NAD(P)HX (By similarity). Accelerates cholesterol efflux from endothelial cells to high-density lipoprotein (HDL) and thereby regulates angiogenesis (PubMed:23719382).

Cellular Location

Mitochondrion {ECO:0000255|HAMAP-Rule:MF_03159}. Secreted {ECO:0000255|HAMAP-Rule:MF_03159, ECO:0000269|PubMed:11991719}. Note=In sperm, secretion gradually increases during capacitation. {ECO:0000255|HAMAP-Rule:MF_03159}

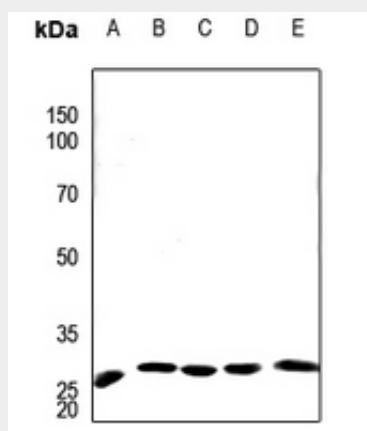
Tissue Location

Ubiquitously expressed, with highest levels in kidney, heart and liver. Present in cerebrospinal fluid and urine but not in serum from healthy patients. Present in serum of sepsis patients (at protein level).

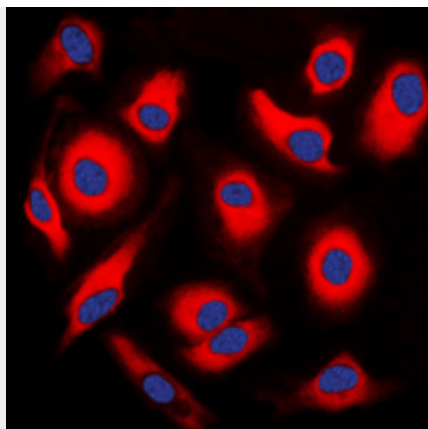
Anti-APOA1BP Antibody - Protocols

Provided below are standard protocols that you may find useful for product applications.

- [Western Blot](#)
- [Blocking Peptides](#)
- [Dot Blot](#)
- [Immunohistochemistry](#)
- [Immunofluorescence](#)
- [Immunoprecipitation](#)
- [Flow Cytometry](#)
- [Cell Culture](#)

Anti-APOA1BP Antibody - Images

Western blot analysis of APOA1BP expression in DLD (A), mouse liver (B), mouse heart (C), rat kidney (D), rat heart (E) whole cell lysates.



Immunofluorescent analysis of APOA1BP staining in HEK293T cells. Formalin-fixed cells were permeabilized with 0.1% Triton X-100 in TBS for 5-10 minutes and blocked with 3% BSA-PBS for 30 minutes at room temperature. Cells were probed with the primary antibody in 3% BSA-PBS and incubated overnight at 4 °C in a humidified chamber. Cells were washed with PBST and incubated with a DyLight 594-conjugated secondary antibody (red) in PBS at room temperature in the dark. DAPI was used to stain the cell nuclei (blue).

Anti-APOA1BP Antibody - Background

KLH-conjugated synthetic peptide encompassing a sequence within the center region of human APOA1BP. The exact sequence is proprietary.